



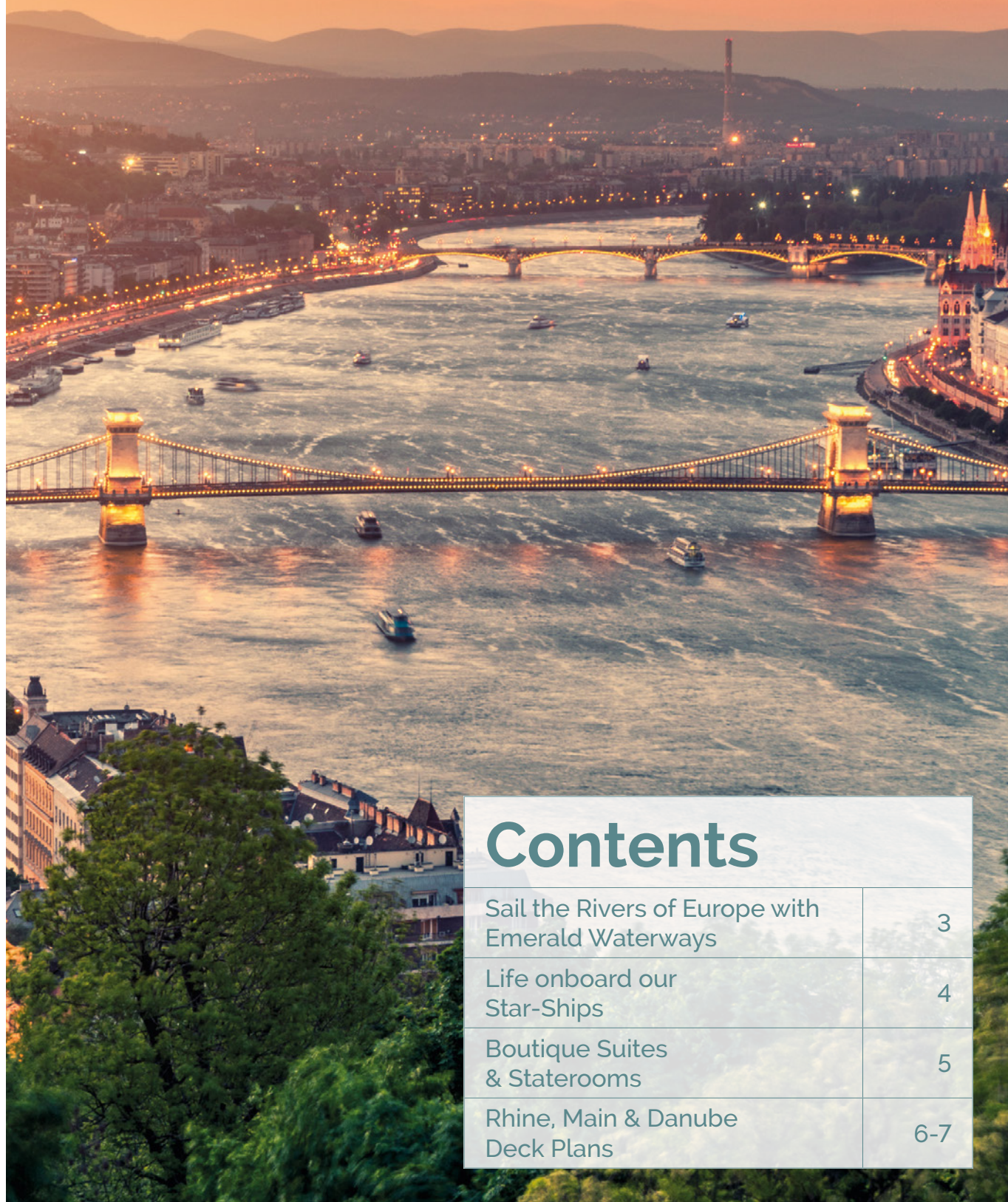
# Rhine, Main & Danube Star-Ships





*“Such a relaxing time on a wonderful river. Our beautiful ship, complete with incredible service, was an absolute dream.”*

*Paul and Stacey Holt*



## Contents

Sail the Rivers of Europe with Emerald Waterways	3
Life onboard our Star-Ships	4
Boutique Suites & Staterooms	5
Rhine, Main & Danube Deck Plans	6-7

# Sail the Rivers of Europe with Emerald Waterways

Europe's enchanting network of rivers sweep through culture-rich cities, towns as old as time, and regions of unparalleled beauty. A river cruise in Europe provides the most captivating passage through the history of this diverse continent.





# Life onboard our Star-Ships

Cutting a stylish and chic figure upon the rivers of Europe; Emerald Waterways' fleet of Star-Ships perfectly marry modern design with deluxe comfort for all guests. Honouring the beauty of some of the world's most aesthetically-stimulating waterways, each member of the fleet has been deliberately and responsibly designed to match and complement the eternal flow of the rivers.

## Pool & Evening Cinema

On the Danube, Rhine, and Main our Star-Ship's most innovative feature has to be the pool. With a retractable roof you can feel the river breeze as you take a dip in our heated pool, in the evenings watch in awe as the pool transforms into a cinema.



## Sun Deck

A panoramic rooftop space, home to a walking track, putting green and games area\*, as well as deck chairs and sun-loungers, perfect for enjoying the spectacular scenery along Europe's most iconic rivers.



## Horizon Bar & Lounge

The social heartbeat of our Star-Ships, comfortable and exceptionally modern, this haven is one of the most popular areas of our vessels. Enjoy local wines, beers, spirits, cocktails or a variety of teas and coffees whilst catching up with new-found friends in the relaxed setting. When the evening arrives, we have a medley of entertainment planned especially for you.



## The Terrace

Situated at the front of the ship on the Horizon Deck, The Terrace boasts breath-taking views. Enjoy coffee and croissants for breakfast and a variety of local light bites for lunch as you watch areas of outstanding natural beauty pass by.



- Sun Deck
- Horizon Deck
- Vista Deck
- Riviera Deck



## Welcoming Atrium

Low-hanging chandeliers and a glistening glass staircase, from the moment you step on-board you're surrounded by stylish, modern décor, every inch is designed with comfort and enjoyment in mind.



## Fitness & Wellness Area

Our gym, complete with modern equipment suits those wanting to keep active during their time on-board. Wanting to unwind? A visit to our Wellness Area for a spa treatment is a must, indulge in a little 'me time' with a massage or facial.



## Hairdressers

Book in with our on-board hairdressers for a new style or a beard trim, a lovely way to treat yourself ahead of a celebratory evening or the Captain's Gala Dinner.



## Reflections Restaurant

Reflections Restaurant is the centre point of our on-board dining experience with a continuously evolving menu capturing seasonal and regional flavours to compliment your days ashore.

Begin your mornings with a hearty breakfast from the buffet offering hot and cold favourites. Following a morning of exploration is a delicious lunch back on-board, choose from regional delicacies, as well as many classics. Dinner is a celebration, enjoy an enticing buffet or à la carte menu with new friends while indulging in sumptuous dining in the most charming of settings.

Included with every lunch and dinner served on-board is a choice of wine, beer and soft drinks. Our wonderfully attentive team will always be on-hand to help you choose a drink to compliment your chosen meal.



\*Please note facilities vary by Star-Ship.



# Boutique Suites & Staterooms

## Undeniably stylish suites & staterooms

Where comfort meets an innovative contemporary design our suites & staterooms are chic, modern sanctuaries. Boasting a wealth of sumptuous features, from luxurious toiletries and a revitalising shower in your spacious en-suite, to a queen size or twin hotel-style bed, draped with luxurious linens. In every cabin bottled water is replenished daily and with free Wi-Fi, a HDTV and infotainment system it's the ideal place to take some time out.

With a wide range of suites and staterooms available, we certainly have a cabin that is perfect for everyone. In all suites, a key feature is our ingenious all-weather system balcony, the perfect place to enjoy the endless river views regardless of the weather. Our staterooms offer a picture window, perfect for admiring the scenery.



### Emerald Panorama Balcony Suite

Among the most spacious on Europe's waters, measuring between 160ft<sup>2</sup> and 180ft<sup>2</sup>, we've put every effort into designing an elegant retreat for you to unwind in. Modern white and wood combinations create a tasteful and tranquil space for you to catch up on some reading, learn about the next destination on your itinerary, or watch a film on your HDTV. Sail past numerous points of outstanding beauty, soaking up every minute from your very own furnished all-weather balcony. This state-of-the-art feature is an inspired replacement allowing you to enjoy the feeling of sitting outside, close to the water and its banks, come rain or shine.

### Owner's One-Bedroom Suite

The embodiment of luxury and spacious design, choose to stay in one of only four of these superior suites which measure between 285ft<sup>2</sup> and 315ft<sup>2</sup>. You'll enjoy exceptional features—such as a separate living room and bedroom which closes off from the rest of the suite, a spacious bathroom, and a walk-in closet, allowing you to fully unwind and unpack. Enjoy a complimentary mini-bar, restocked daily, that's perfect for entertaining guests. You'll also enjoy several additional luxe touches and amenities, such as complimentary laundry service for four items a day; a Nespresso machine; and more. Plus, receive an invite to the Captain's table promises to be a memorable experience!



### Grand Balcony Suite

Enjoy relaxing in your generously-appointed suite, measuring between 207ft<sup>2</sup> and 210ft<sup>2</sup>. Marvel at the magnificent landscape, or watch the sunrise from your floor-to-ceiling all-weather balcony space, while enjoying a continental breakfast, brought to your room. Complimentary snacks delivered to your suite add that extra special touch to your evenings, whether it's delicious canapés before dinner or sweet treats to indulge in before bed. As well as this, your personal Nespresso machine means you can relax with a creamy cappuccino or latte at any time of the day. For those special evenings, make the most of your complimentary laundry service including two items washed per day.

### Emerald Stateroom

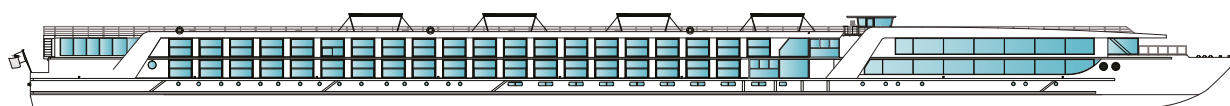
Located on the Riviera Deck, our staterooms range from 153ft<sup>2</sup> to 170ft<sup>2</sup>, larger than the average standard stateroom on European waters. Picture windows are perfect for admiring the ever-changing views, while free Wi-Fi and HDTV and infotainment system, en-suite bathroom with revitalizing shower and luxurious toiletries mean you can transform this lovely space into your perfect home away from home. Single staterooms, from 105ft<sup>2</sup> to 117ft<sup>2</sup>, with deluxe single beds, provide excellent value for money, while couples will find that the Emerald Staterooms offer plenty of space to accommodate two.



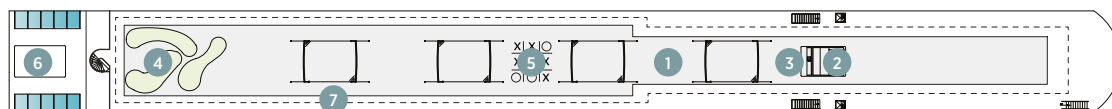
# Rhine, Main & Danube deck plans

## Emerald Sky, Star, Dawn & Sun

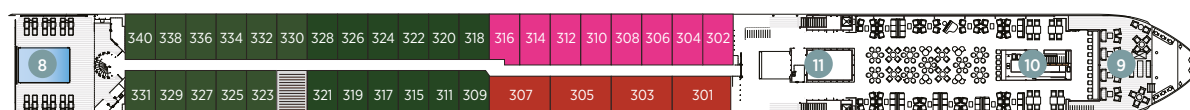
- Built: 2014/15
- Length: 443ft (135m)
- Guests: 182
- Cabins: 92
- Crew Members: 47



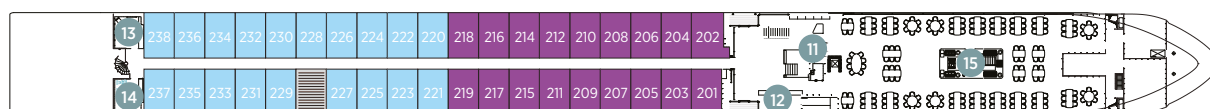
Sun Deck



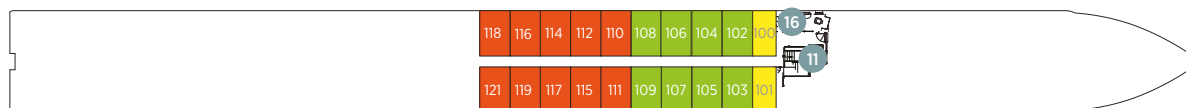
Horizon Deck



Vista Deck

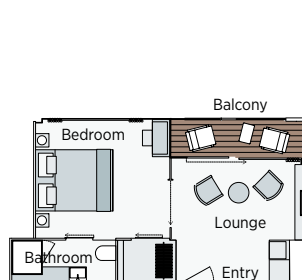


Riviera Deck

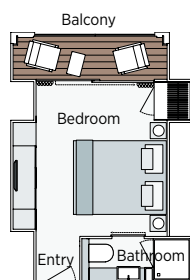


Cabin Categories		
Horizon Deck		Size ft² (m²)
<b>CAT SA</b>	Owner's One-Bedroom Suite	315ft² (29.3m²)
<b>CAT S</b>	Grand Balcony Suite*	210ft² (19.5m²)
<b>CAT A</b>	Emerald Panorama Balcony Suite	180ft² (16.7m²)
Vista Deck		Size ft² (m²)
<b>CAT B</b>	Emerald Panorama Balcony Suite	180ft² (16.7m²)
<b>CAT C</b>	Emerald Panorama Balcony Suite	180ft² (16.7m²)
Riviera Deck		Size ft² (m²)
<b>CAT D</b>	Emerald Stateroom	162ft² (15m²)
<b>CAT E</b>	Emerald Stateroom	162ft² (15m²)
<b>CAT ES</b>	Emerald Single Stateroom	117ft² (10.9m²)

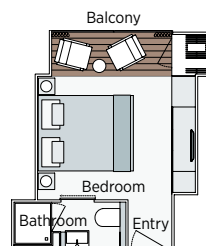
- 1 Sun Deck with Deck Chairs^
- 2 Navigation Bridge
- 3 Sky Barbecue
- 4 Golf Putting Green
- 5 Games Area
- 6 Retractable Glass Roof
- 7 Walking Track
- 8 Daytime Pool & Bar/Evening Cinema
- 9 The Terrace
- 10 Horizon Bar & Lounge
- 11 Elevator
- 12 Reception
- 13 Wellness Area
- 14 Fitness Area
- 15 Reflections Restaurant
- 16 Hairdresser



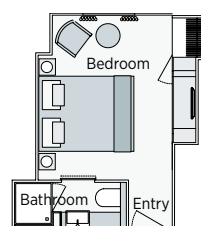
Owner's One-Bedroom Suite  
315ft² (29.3m²)  
**CAT SA**



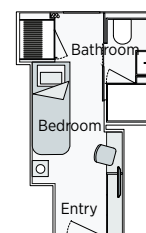
Grand Balcony Suite  
210ft² (19.5m²)  
**CAT S**



Emerald Panorama Balcony Suite  
180ft² (16.7m²)  
**CAT A CAT B CAT C**



Emerald Stateroom  
162ft² (15m²)  
**CAT D CAT E**



Emerald Single Stateroom  
117ft² (10.9m²)  
**CAT ES**

**Important Information:** On Emerald Sky and Emerald Star, cabin 202 has modified entry, bathroom configuration with personal assistance fittings and has no decked area with table and chairs. The cabin and deck plans, sizes and photographs are an indication only and are subject to variation.

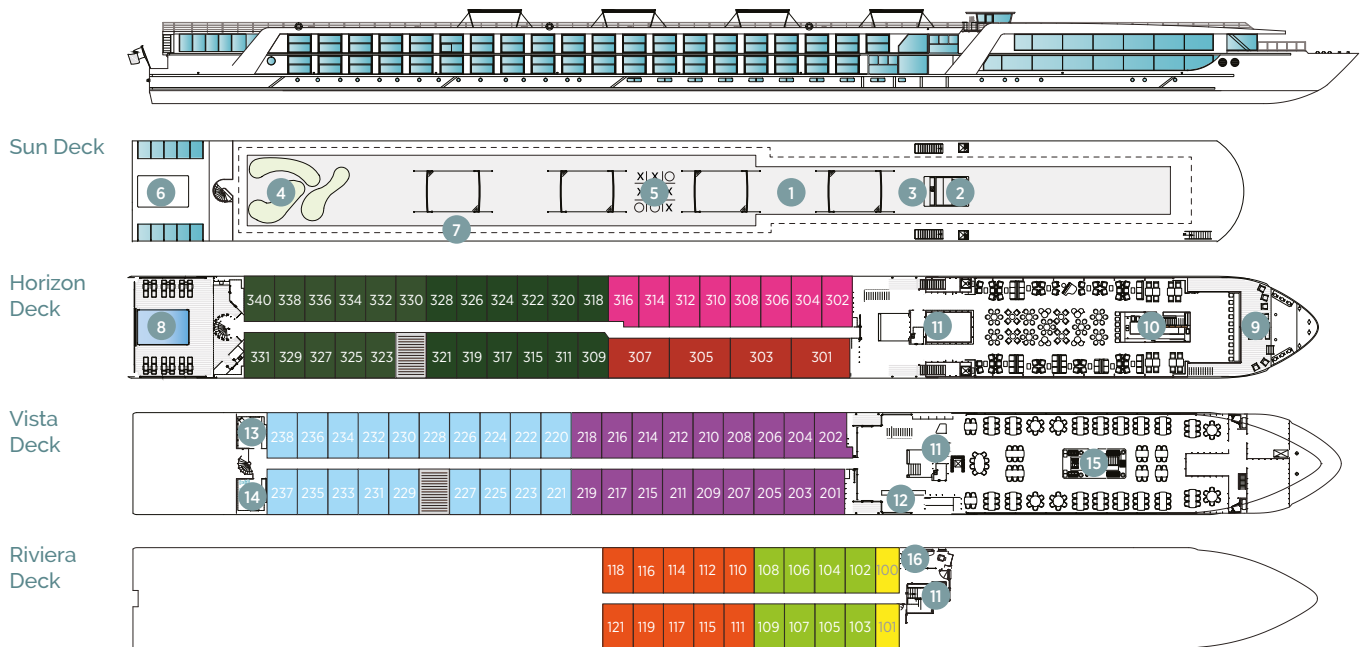
^ Due to safety, the Sun Deck will be closed when travelling under low bridges.

\* Cabin 316 has a slightly varied layout.

# Rhine, Main & Danube deck plans

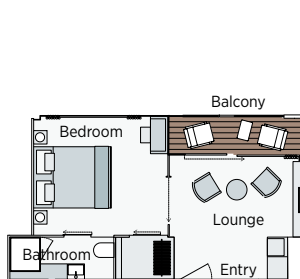
## Emerald Destiny

- Built: 2017
- Length: 443ft (135m)
- Guests: 182
- Cabins: 92
- Crew Members: 47

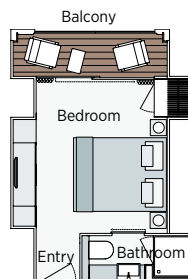


Cabin Categories		
Horizon Deck		Size ft² (m²)
<b>CAT SA</b>	Owner's One-Bedroom Suite	315ft² (29.3m²)
<b>CAT S</b>	Grand Balcony Suite*	210ft² (19.5m²)
<b>CAT A</b>	Emerald Panorama Balcony Suite	180ft² (16.7m²)
Vista Deck		Size ft² (m²)
<b>CAT B</b>	Emerald Panorama Balcony Suite	180ft² (16.7m²)
<b>CAT C</b>	Emerald Panorama Balcony Suite	180ft² (16.7m²)
Riviera Deck		Size ft² (m²)
<b>CAT D</b>	Emerald Stateroom	162ft² (15m²)
<b>CAT E</b>	Emerald Stateroom	162ft² (15m²)
<b>CAT ES</b>	Emerald Single Stateroom	117ft² (10.9m²)

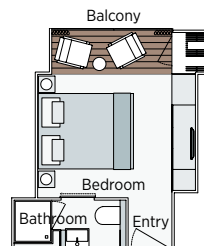
- 1 Sun Deck with Deck Chairs^
- 2 Navigation Bridge
- 3 Sky Barbecue
- 4 Golf Putting Green
- 5 Games Area
- 6 Retractable Glass Roof
- 7 Walking Track
- 8 Daytime Pool & Bar/Evening Cinema
- 9 The Terrace
- 10 Horizon Bar & Lounge
- 11 Elevator
- 12 Reception
- 13 Wellness Area
- 14 Fitness Area
- 15 Reflections Restaurant
- 16 Hairdresser



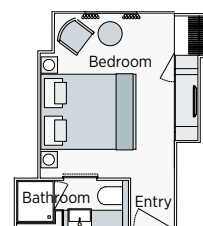
**Owner's One-Bedroom Suite**  
315ft² (29.3m²)  
**CAT SA**



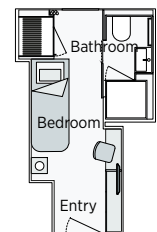
**Grand Balcony Suite**  
210ft² (19.5m²)  
**CAT S**



**Emerald Panorama Balcony Suite**  
180ft² (16.7m²)  
**CAT A CAT B CAT C**



**Emerald Stateroom**  
162ft² (15m²)  
**CAT D CAT E**



**Emerald Single Stateroom**  
117ft² (10.9m²)  
**CAT ES**

**Important Information:** On Emerald Destiny The Terrace has a slightly varied layout to the other European Star-Ships, with only chairs instead of tables. The cabin and deck plans, sizes and photographs are an indication only and are subject to variation.

^ Due to safety, the Sun Deck will be closed when travelling under low bridges.

\* Cabin 316 has a slightly varied layout.